



# High Pressure Quick Release Coupler

## Features & Benefits

No-spill spring loaded poppets in both male and female sections, ensuring complete sealing.

Specifically designed for high pressure CNG use

All stainless steel construction giving corrosion and wear resistance.

Hardened segment connection style increases surface area 17 - 35 times. Significantly reducing wear on male coupling.

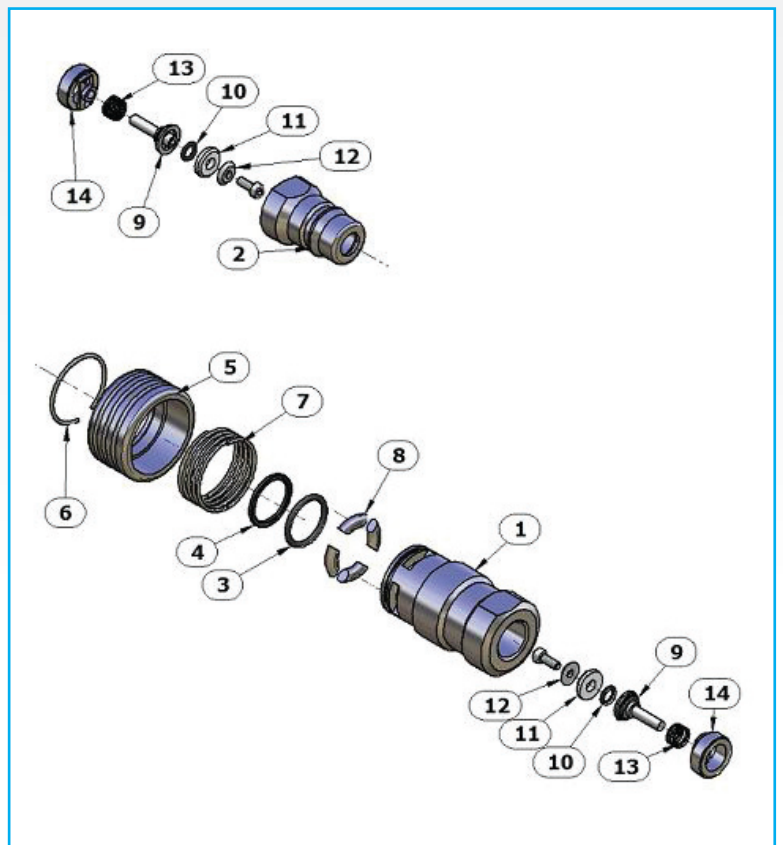
Impact resistant.



## Materials

ITEM	DESCRIPTION	MATERIAL
1	HP QC Body	T304 Stainless steel*
2	HP QC Plug	T304 Stainless steel*
3	Body O-ring	EDPM
4	Back-up	EDPM
5	Sleeve	T304 Stainless steel*
6	Sleeve Retainer	T304 Stainless steel*
7	Segment	420 Stainless steel*
8	Pop O-ring Retainer	T316 Stainless steel*
9	Poppet Retainer	T316 Stainless steel*
10	Poppet O-ring	EPPM
11	Sleeve Spring	Stainless steel*
12	Poppet	T316 Stainless steel*
13	Poppet Spring	Stainless steel*

\* 316 available on request.

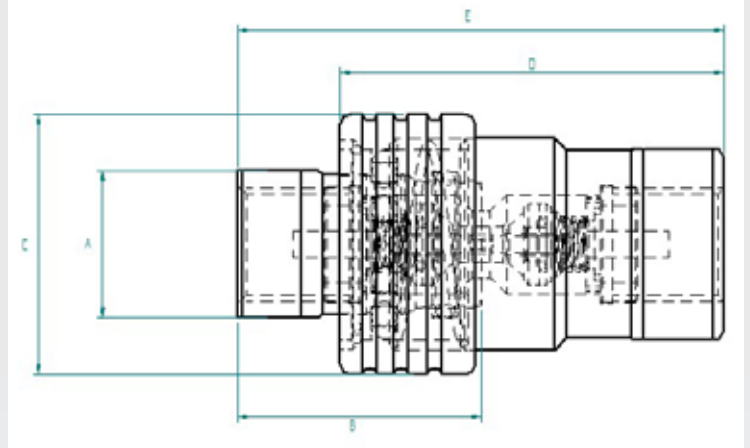




## High Pressure Quick Release Coupler

### Application & Specification Information

- Fastflow filling systems.
- Storage cascade to trailer/transporter.
- Trailer/Transporter connection to Daughter compressor.
- Direct feed to CNG dispensers.



### Dimensions (mm)

PART CODE	NOMINAL SIZE	MALE OD A	MALE LENGTH B	FEMALE OD C	FEMALE LENGTH D	COUPLED LENGTH E	C <sub>v</sub>	K <sub>v</sub> <sup>+</sup>
QC104	1/2"NPT	31	45	48	71	90	2.77	2.39
QC108	1"NPT		In product proofing. Talk to Oasis.				8.04	6.93

\* C<sub>v</sub> = USGPM - PSI.

+ K<sub>v</sub> = M<sup>3</sup>/hr - Bar.

Operating Pressure Range up to 6000 PSI.

NPT female is standard quoted thread. SAE, BSP male or female ends available or as per customer request. Dimensions may change.

Quoted price is for complete units (Male + Female).

Available individually if required.

All products are manufactured to ISO 9001:2000 standards.

3/8", 3/4" & 1 1/2" available on request.

ISO 7241-1(B) profile or Oasis custom profile (preventing non authorised coupling).

Other profiles available on request.